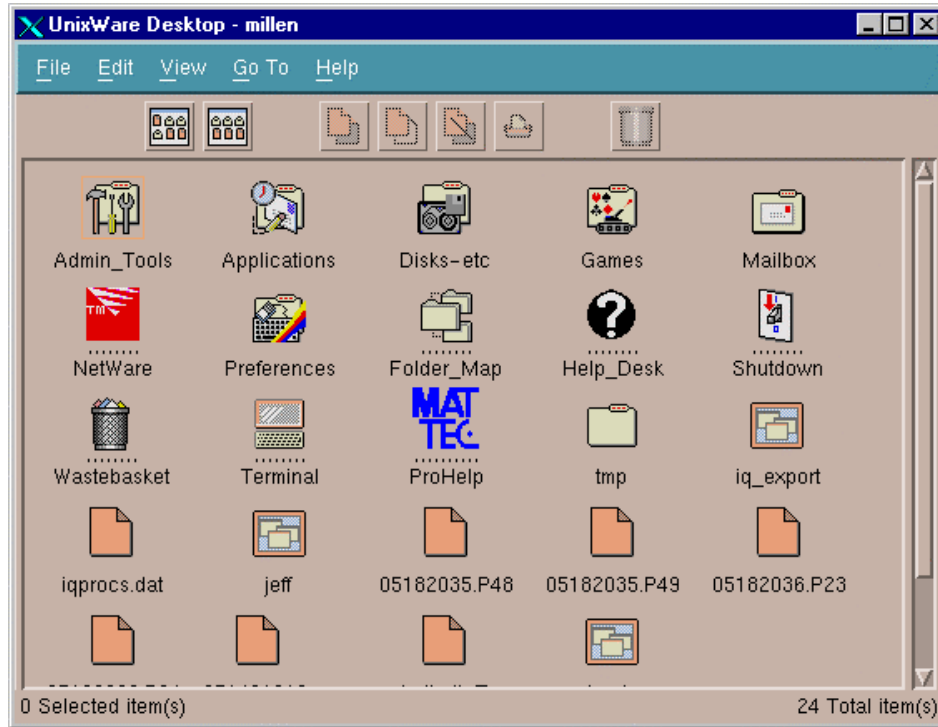
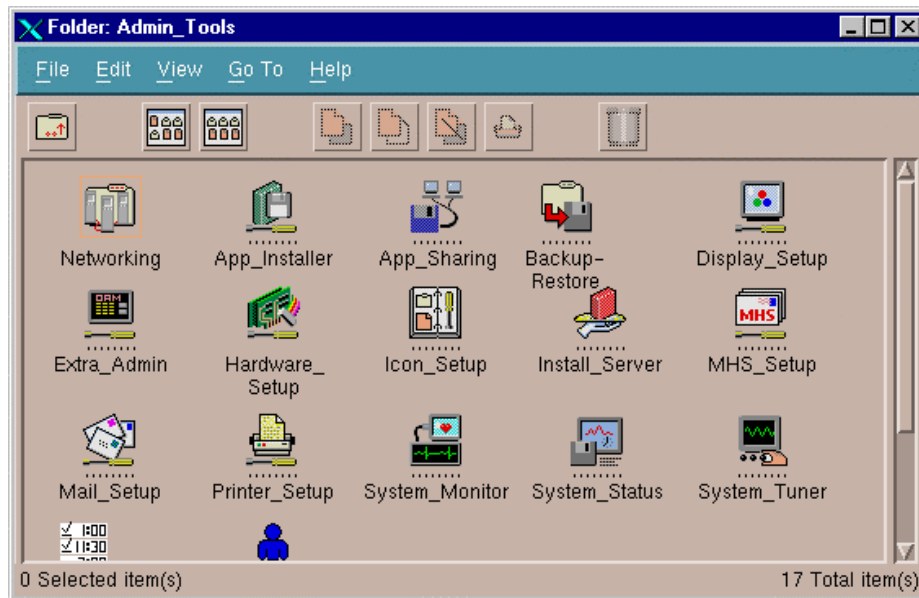
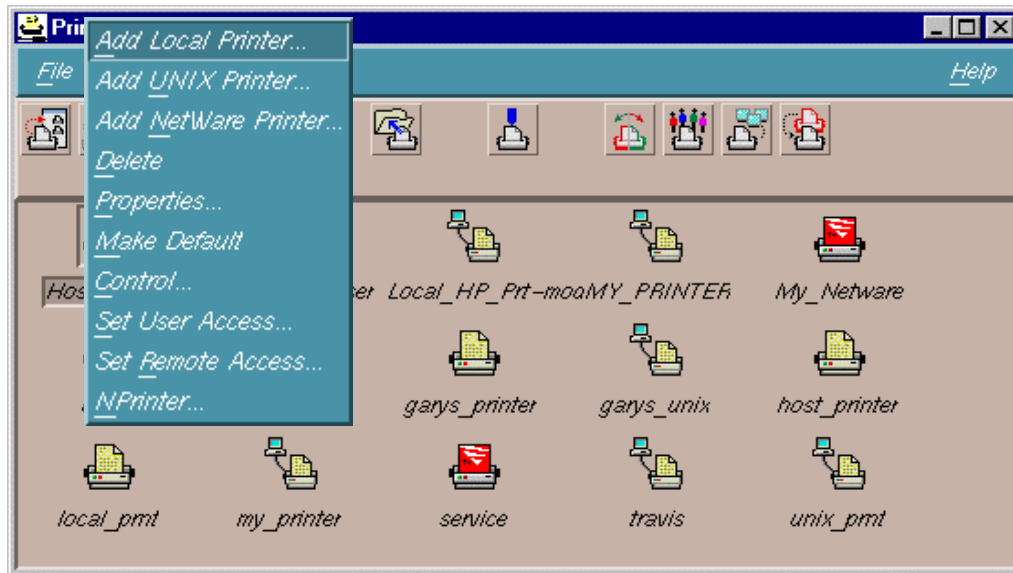


SETUP SCO UNIXWARE LOCAL PRINTER

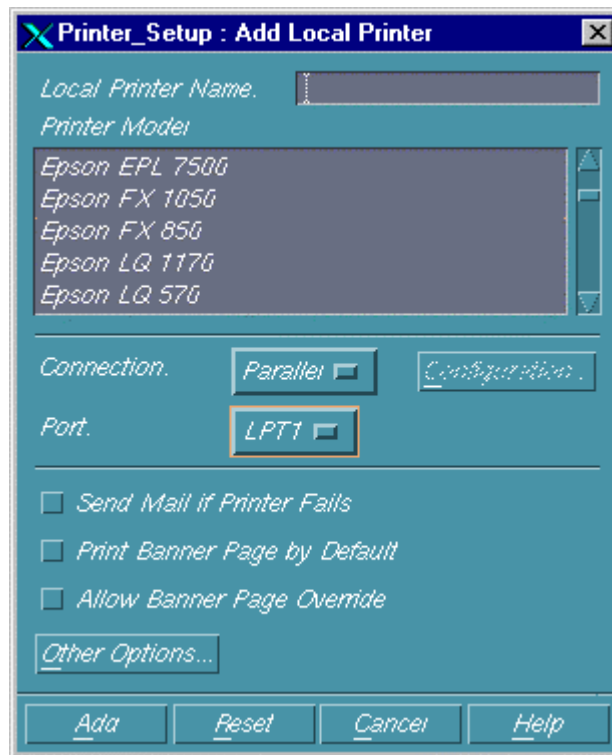


Get to the UnixWare desktop screen above and click the **Admin_Tools** icon. You will get a window similar to below. Find and click the **Printer_Setup** icon as shown below.





Select the **Printer** menu on the Printer_Setup window above and choose **Add Local Printer**.



Give the **printer a name** and select the **Printer Model**. Mattec currently supports the Epson FX 1050, Epson FX 850, HP LaserJet (PCL), HP LaserJet (Postscript), and HP DeskJet 500 (Deskjet 500 only on Millennium 2.61 or higher). Select the **connection type** and **port**. Click off the fields **Send Mail if Printer Fails**; **Print Banner Page by Default**; **Allow Banner Page Override**. Click the **Add** button to complete the setup. You will need to perform a shutdown on the SCO UnixWare PC in order for the printer to be acknowledged.