

## Configuring SQL Server RAM

*This application note describes how to manually configure the RAM that is allocated to SQL Server 7.*

*This application note is intended for Mattec personnel or extremely advanced users only.*

### 1. Overview

System administrators must manually configure the amount of RAM that is allocated to SQL Server 7 in order for your ProHelp® EPM system to function properly.

The application note presumes that the ProHelp® EPM server has a minimum of 512 Meg of RAM. Customers who have less than 512 Meg of RAM in the server should upgrade their computer immediately.

### 2. How Much RAM Should I Allocate

Determining the amount of RAM to allocate to SQL Server is not a science – it is more of an art. One suggestion is to use the following rules-of-thumb:

- Reserve at least 128 Meg of RAM for Windows NT, ProHelp® EPM, and other software programs. If the server has a sufficient amount of RAM, reserve 256 Meg for these processes.
- Allocate all remaining RAM to SQL Server.
- Never allocate less than 256 Meg of RAM to SQL Server.

Consider the following examples:

Assume system #1 has the minimum recommended amount of RAM – 512 Meg. Using the rules above, you would allocate 384 Meg for SQL Server and leave the remaining 128 Meg unallocated (for use by “other” processes).

Assume system #2 has 1 Gig of RAM. Using the rules above, you would allocate 896 Meg of RAM to SQL Server and leave the remaining 128 Meg unallocated. Alternately, you might allocate 768 Meg of RAM to SQL Server and leave the remaining 256 Meg unallocated.

Assume system #3 has 256 Meg of RAM. You should upgrade the computer immediately!

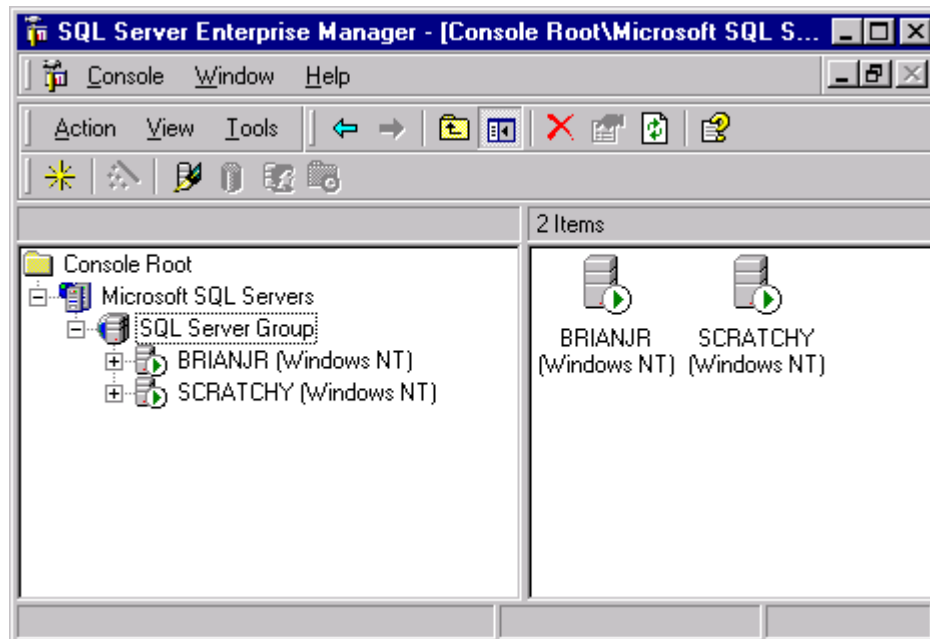
### 3. Configuring SQL Server

SQL Server 7 allows for two configuration modes for RAM:

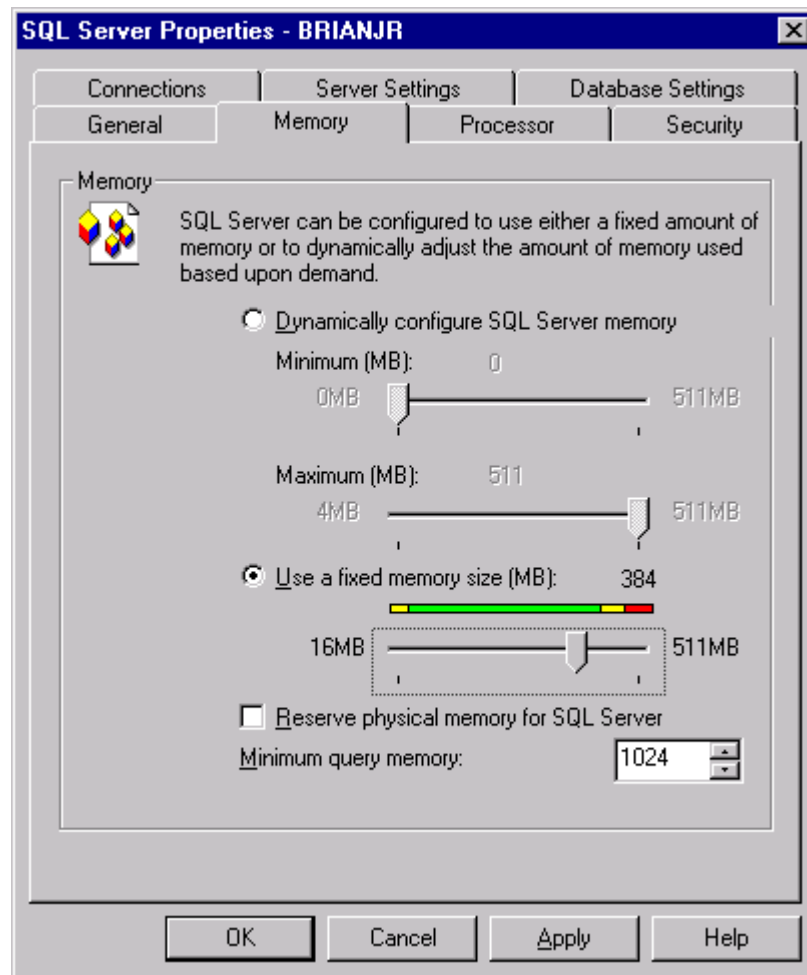
- Dynamically configure SQL Server memory – the administrator specifies the minimum and maximum values for the amount of RAM that SQL Server will use. By default, this option is selected and SQL Server is configured to use a minimum of 0 Meg of RAM and a maximum of all RAM in the machine.
- Use a fixed memory size – the administrator specifies a fixed amount of RAM that will be reserved for SQL Server.

To configure the amount of RAM for use by SQL Server, follow these steps:

- Reboot the computer and log in as **Administrator**.
- Execute the **SQL Server Enterprise Manager**. To do this, click on the **Start Menu**, select **Programs**, select **Microsoft SQL Server 7.0**, and select **Enterprise Manager**.
- Navigate to the appropriate server name as shown below:



- Right click on the appropriate server and select **Properties**.
- Click the **Memory** tab, select **Use a fixed memory size (MB)**, and specify the appropriate amount of RAM for SQL Server to use.
- Reboot the computer to ensure that your changes take effect.



Note: It may be difficult to specify the precise amount of RAM that is desired using the slider bar that is provided. Although this isn't very important, you can use the left and right arrow keys to do this.