

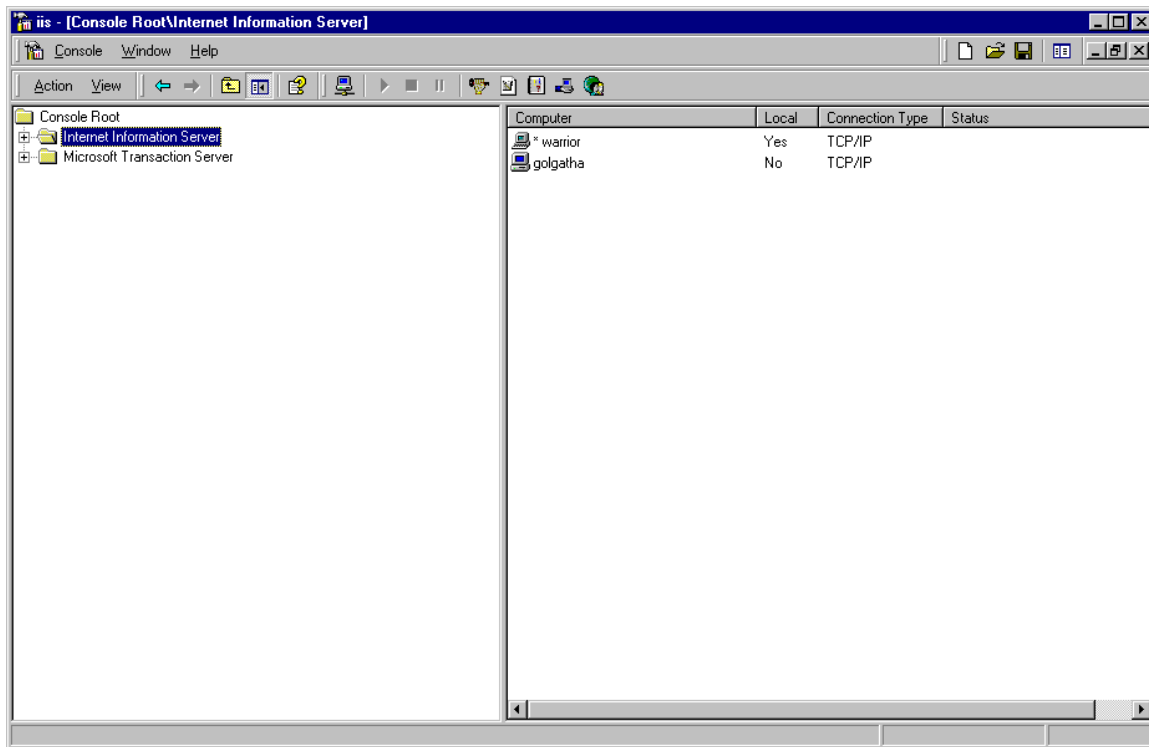
## Manually Configuring IIS

*This application note describes how to manually configure Microsoft's Internet Information Server (IIS) and the ProHelp® EPM Web Reporting option. This configuration is typically performed by the Web Reporting option's installation program. This information is provided for debugging purposes for advanced users only.*

This Application Note presumes that the user has already installed Microsoft Windows NT, the appropriate Windows NT Service Pack(s), and Option Pack 4. IIS is included as part of Option Pack 4.

### Starting the Internet Service Manager

All actions that are described are executed by using the **Internet Service Manager**, also referred to as the **MMC Console**, the **MMC**, or the **console**, shown below:



To start the **Internet Service Manager**, follow these steps:

- Log in to the computer as **Administrator**.
- Click on the **Start Menu**, select **Programs**, select **Windows NT 4.0 Option Pack**, select **Microsoft Internet Information Server**, and select **Internet Service Manager**. The **MMC Console** will be displayed.

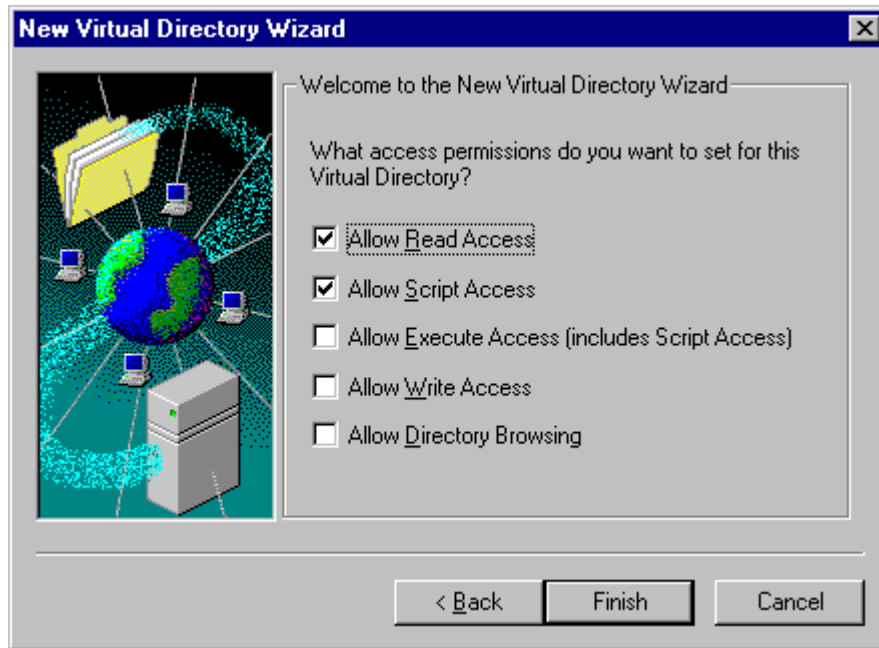
### Manually Configuring IIS

To manually configure IIS for use with MATTEC's Web Reporting option, follow these steps:

- Start the Internet Service Manager as described above.
- Navigate to the **Default web site** folder for the machine that will be running the Web Reporting option.
- Right click on the **Default web site** folder, select **New**, and select **virtual Directory**.
- The **New virtual Directory wizard** will guide you through the process of creating a new virtual directory.

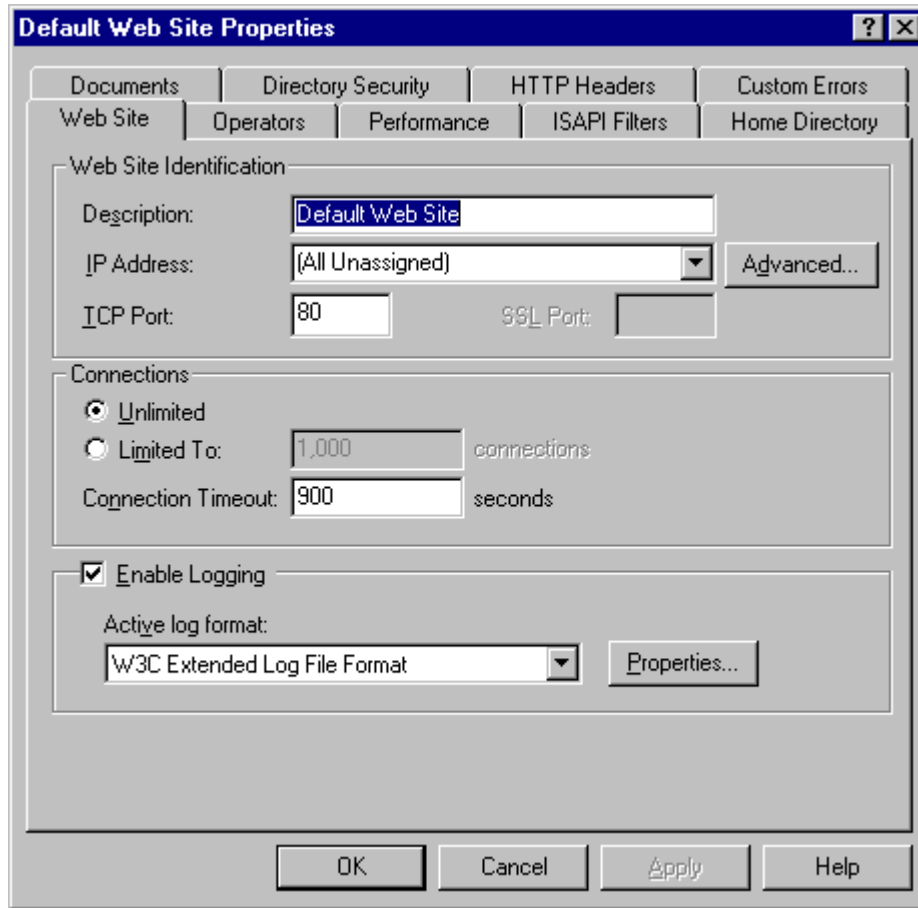


- Enter **viewer** as the alias for the new virtual directory and press **Next**.
- Enter the complete path for the local ProHelp® EPM Viewer Directory, typically **C:\Program Files\Mattec\ProHelp\Viewer**. It is OK to press the **Browse** button and select the path. Press **Next**.

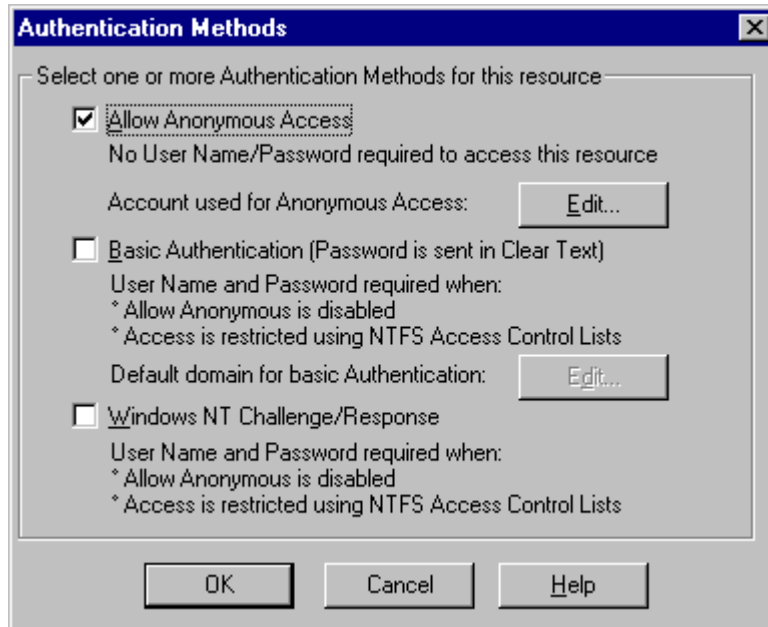


- Give the user **read Access** and **Script Access** as shown above. Press **Finish**.
- Repeat this process to create the **EPMreports** alias with access to the local ProHelp® EPM Web Report Directory, typically *C:\Program Files\Mattec\ProHelp\WebRpt*.

- Right click on the **Default web site** folder and select **Properties**.

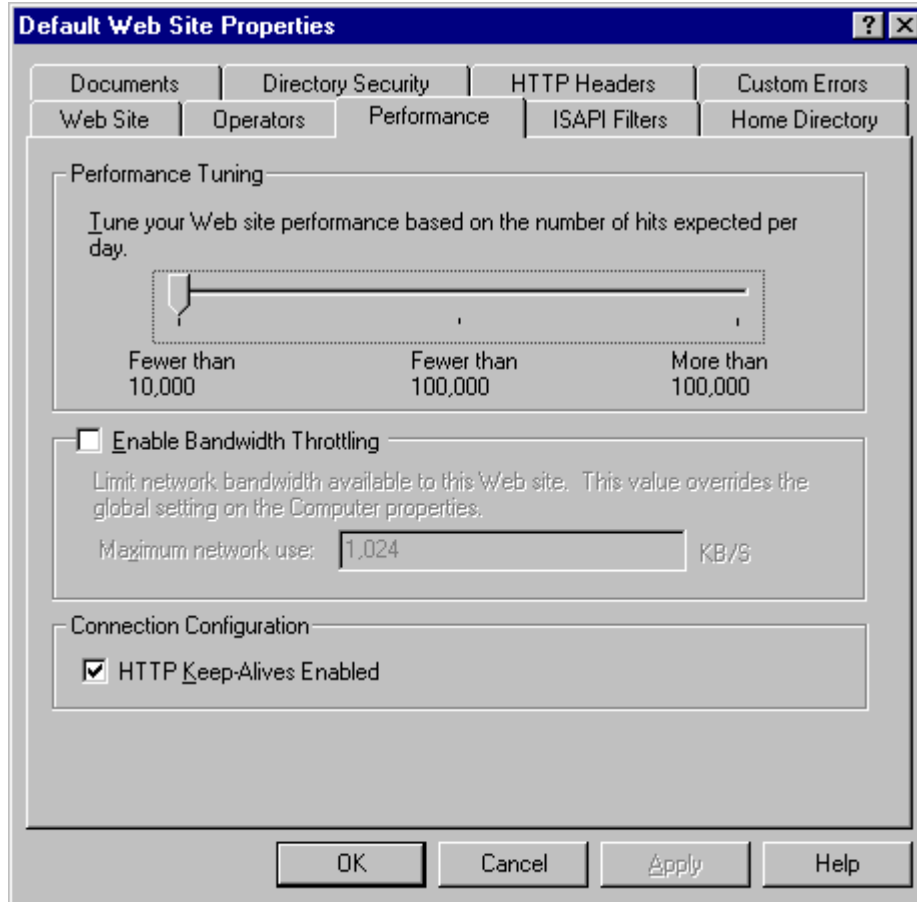


- Select the **Directory Security** tab and press the **Edit** button that is in the **Anonymous Access and Authentication Control** group box.

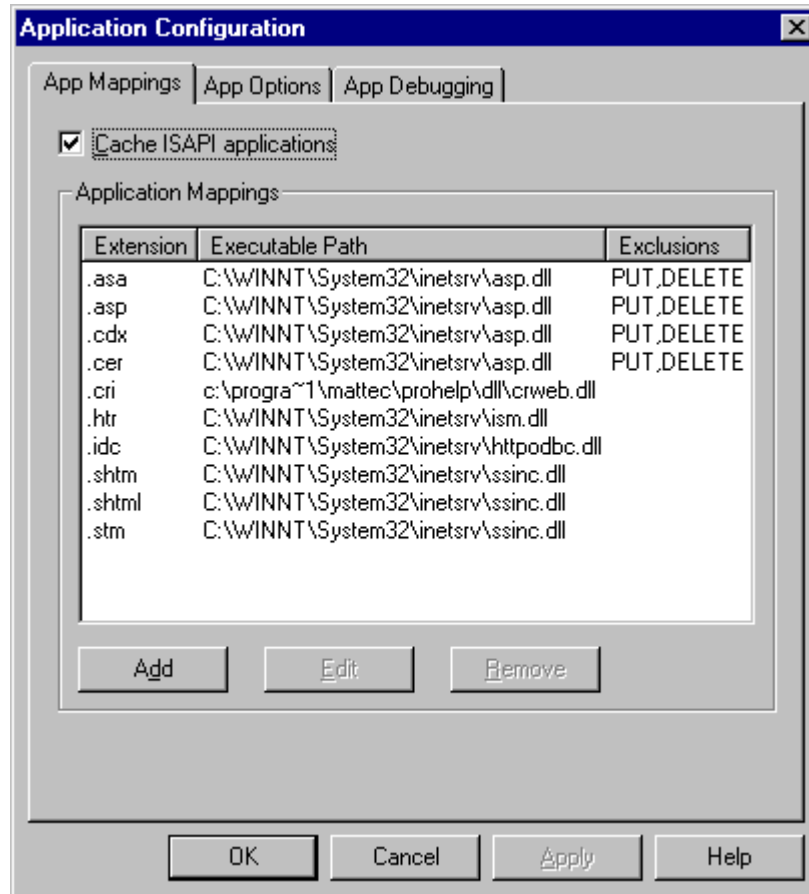


- Ensure the **Authentication Methods** dialog box has only the **allow Anonymous Access** option selected. You must clear all other checkboxes. Press **OK** to save your changes.

- Click on the **Performance** tab (shown below). Set the **Performance Tuning** slider to **Fewer than 10,000**. Press **OK** to save your changes.

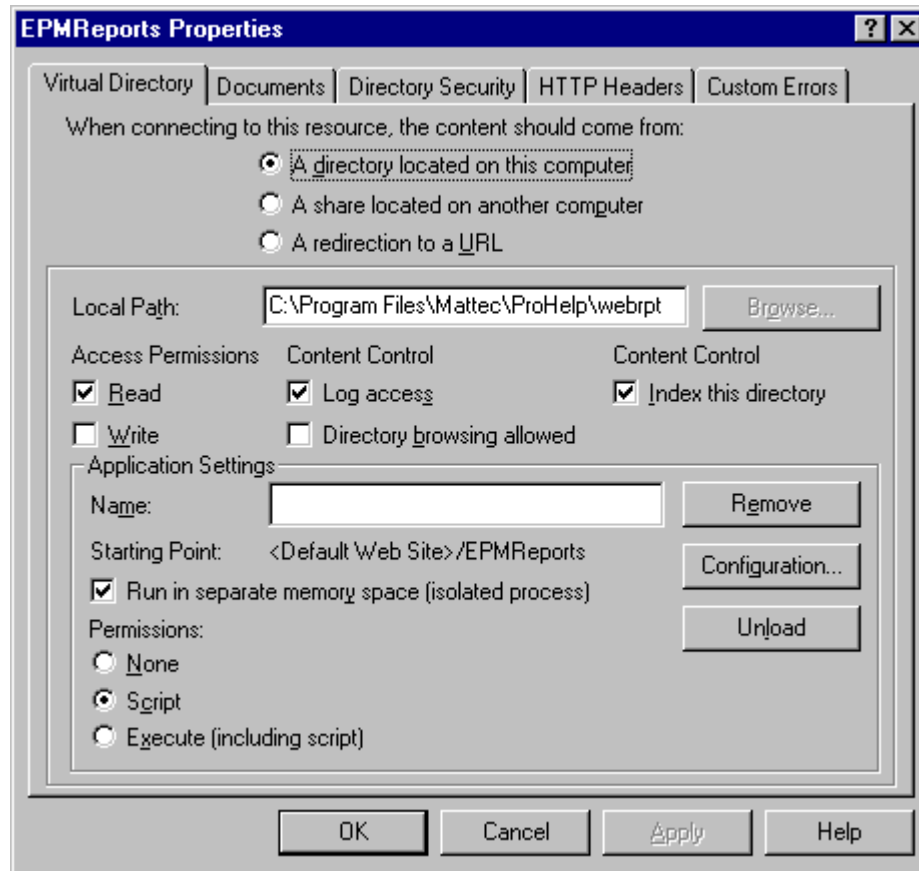


- Click on the **Home Directory** tab (not shown). Press the **Configuration** button. The **Application Configuration** screen will be displayed (shown below).



- In this dialog, use the **Add** button to create a mapping with a **.cri** Extension for the **crweb.dll** that was installed in the ProHelp® EPM DLL Directory, typically **C:\Program Files\Mattec\ProHelp\DLL**. The entry should look similar to the **.cri** Extension entry that is shown above.
- Press **OK** to save your changes.

- Right click on the **EPMReports** item in the **Default Web site** folder and select **Properties**.



- By default, the box labeled **Run in separate memory space** will be turned off. Turn this option on so the screen looks like the one displayed above.
- Click on the **Configuration** tab and verify that the site has accepted the **.cri** entry that was created above. If not, recreate the **.cri** entry as described above.
- Click on the **Directory Security** tab and press the **Edit** button that is in the **Anonymous Access and Authentication Control** group box. Verify that **Allow Anonymous Access** is the only authentication method that is selected.
- Press **OK** to save your changes.
- In the **MMC Console** window, click on the **Console** menu and select **Exit**.
- Reboot the computer to ensure that all of your changes have taken effect.