

Creating Custom Real-Time Displays For ProHelp™ EPM

1. Real-Time Displays

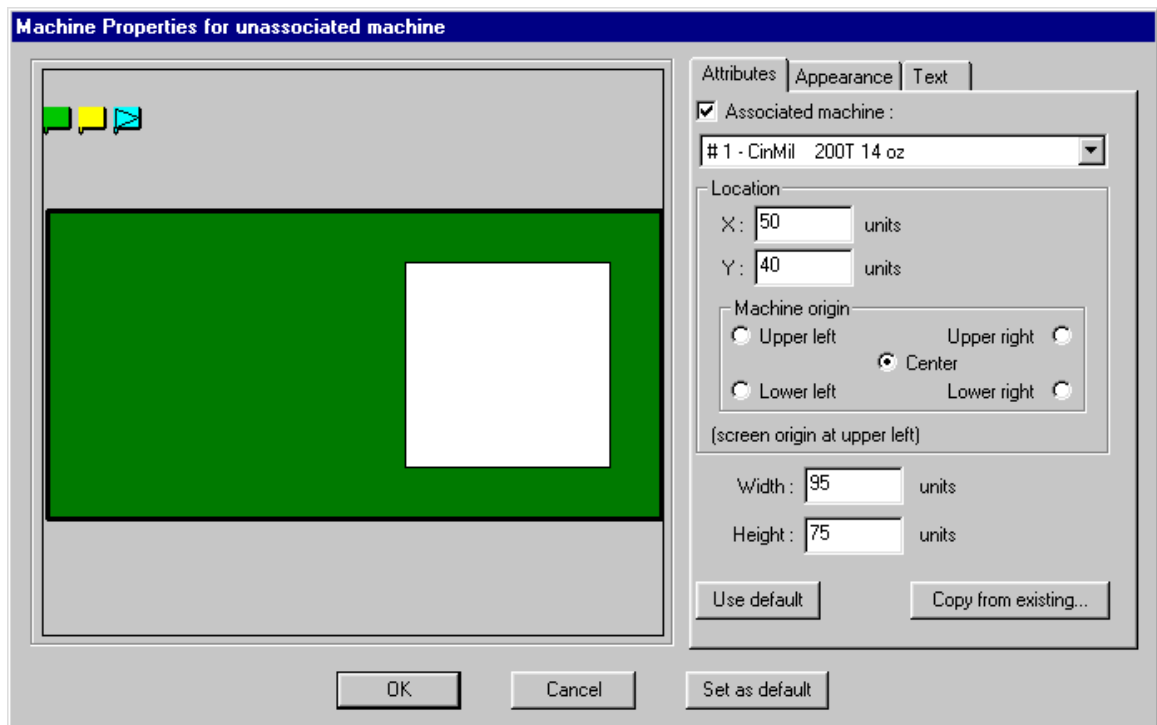
The graphical real-time displays that are available in ProHelp™ EPM are one of the biggest advantages to using ProHelp™ EPM. They can easily display the real-time status of an entire facility at a glance.

To effectively utilize the real-time displays, it's important to customize them to meet your needs. To do this, follow these steps:

- Start the Real-Time Display facility from the ProHelp™ EPM Main Menu.
- Click on the **F1oor** menu and select **n**ew. Name the floor as appropriate and press **OK**.
- Maximize the real-time display.
- Right-click on the floor background and select **P**roperties. Change the floor **w**idth to 300 and **h**eight to 170, or appropriate numbers that expand the floor background to the full size of the screen.
- If desired, change the floor's **B**ackground **S**olid **C**olor to **G**ray, or an appropriate color.
- Press **OK** to save your changes.

Before adding machines to the display, it's important to select a size and shape that will be pleasing to the eye. To do this, follow these steps:

- Right-click on the real-time display and select **Add Machine**.
- On the **Attributes** tab, select to **Associate machine** and select the machine from the pull-down list.
- Set the **x-Location** to **50** and the **y-Location** to **40**. Specify the **Machine origin** as **Center**. This specifies this particular machine's location (upper-left hand corner) on the real-time display.
- Set the machine's **width** to **95** and **height** to **75**. This specifies the machine's size (large) when placed on the real-time display.



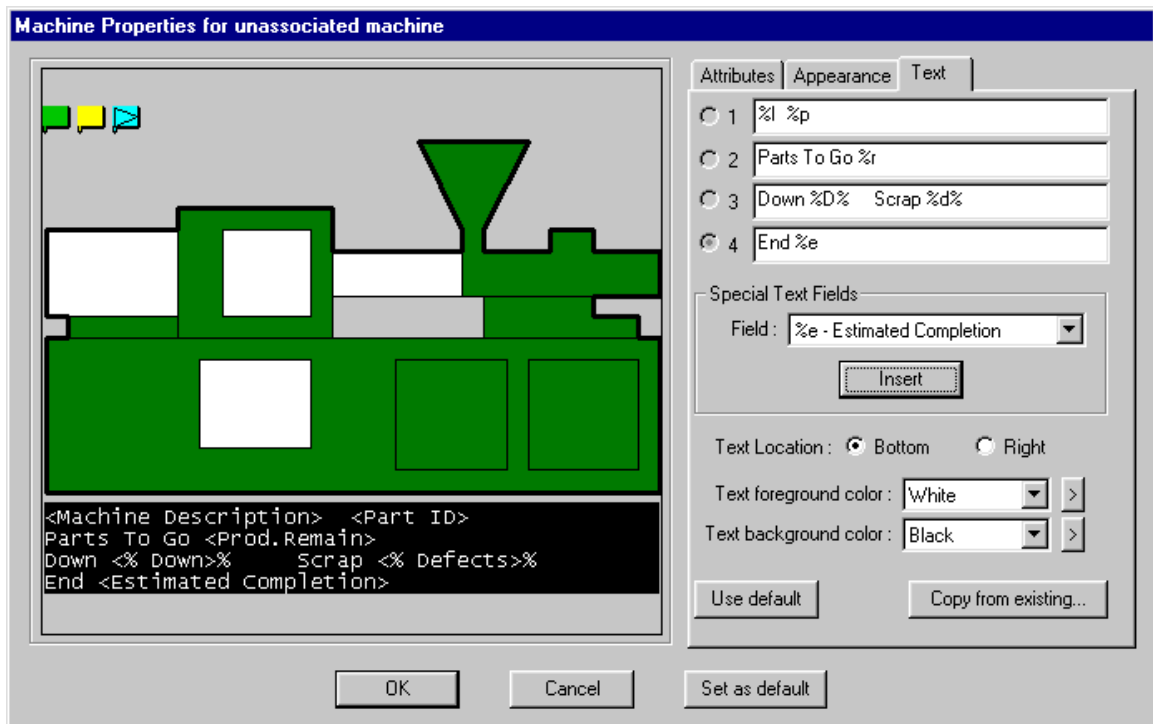
- Click the **Appearance** tab and set the **Shape** to **Injection Molding Machine** or another appropriate icon from the pull-down list. It may be necessary to modify the machine's **Height** and **width** (on the **Attributes** tab) for the machine icon to look normal.

The **Text** tab can be used to modify the four lines of text that are displayed below every machine icon. Recall that, depending on the zoom mode, 1 or more of these lines of text may be invisible. To display more detail about a particular machine, simply zoom in on that machine.

When modifying the text that will be displayed for a particular machine, recall that you can mix static text (i.e., text that you type in) and variable text (i.e., fields that are related to machine or job information). These fields can be combined to create an appealing demo.

- Select the **Text** tab.
- In the **Special Text Fields** box, select the item of information that you are interested in displaying from the pull-down list. For example, select the **%1 - Machine Description** field.
- Position the mouse's cursor in the line 1 edit box.
- Press the **Special Text Fields Insert** button to insert the selected field into line 1.
- Repeat this process as desired.

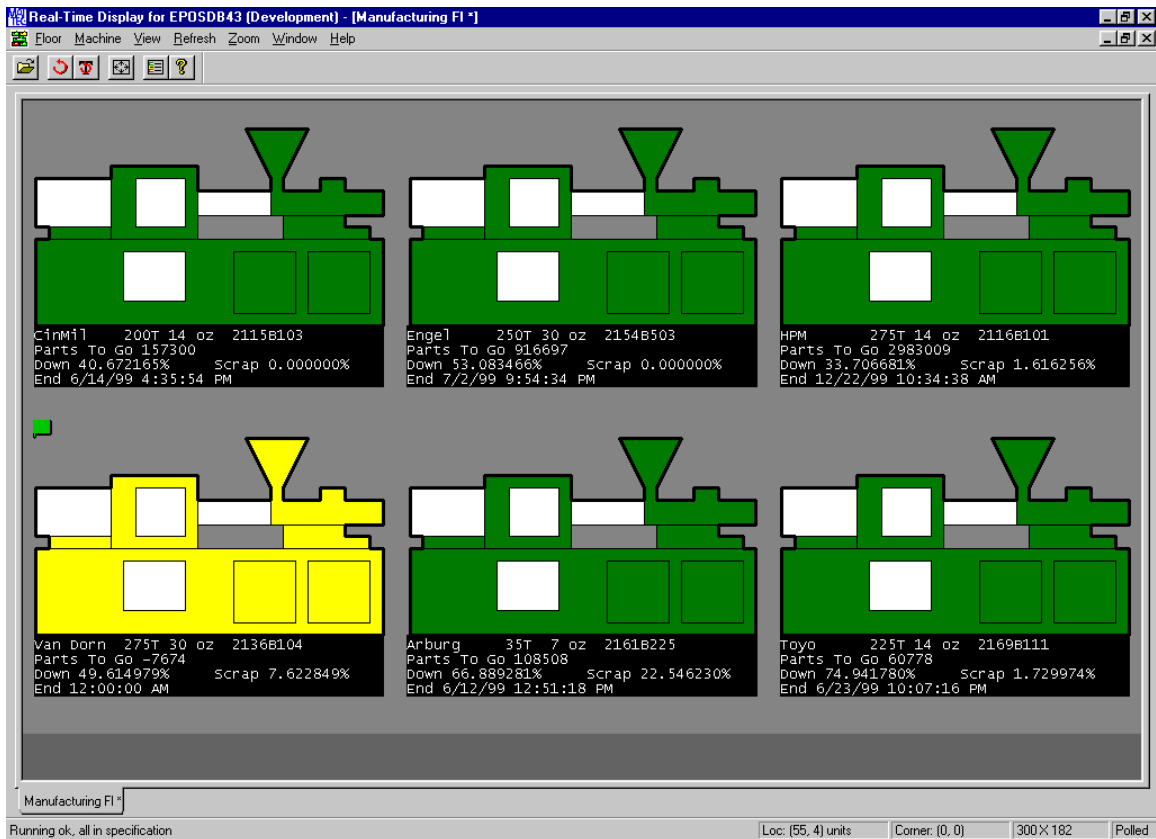
Variable text will always be preceded by the % symbol. However, you can use the % symbol, as shown below. Notice that line 3 contains the static text "Down", the variable text for machine downtime percentage (%D), the static text for the "%" symbol, etc.



Once you've configured this machine as desired, it is easiest to use this configuration for all machines that will be displayed on your real-time display floor. Press the **set as default** button and this configuration will be used for all machines that you create (for this particular floor).

Before exiting, ensure that you save your new display by clicking the **Floor** menu and selecting **save**. If you intend to use this new display frequently, you can save it as your default real-time screen by clicking the **Floor** menu and selecting **set as default**.

The finished floor might resemble the following:



Suggested Real-Time Display Floor #1

The following real-time display floor will display 6 large machines, three across by two down. This is the real-time display that is shown above. All four lines of text are displayed at all times.

X Value	Y Value	Width	Height	Icon Location
50	40	95	75	Row 1, Column 1
150	40	95	75	Row 1, Column 2
250	40	95	75	Row 1, Column 3
50	123	95	75	Row 2, Column 1
150	123	95	75	Row 2, Column 2
250	123	95	75	Row 2, Column 3

Recommended Real-Time Display Floor #2

The following real-time display floor will display 20 machines, five across by four down. Only two lines of text can be displayed in this configuration until the user zooms in. Once zoomed in, all four lines of text can be displayed.

X Value	Y Value	Width	Height	Icon Location
30	18	50	30	Row 1, Column 1
90	18	50	30	Row 1, Column 2
150	18	50	30	Row 1, Column 3
210	18	50	30	Row 1, Column 4
270	18	50	30	Row 1, Column 5
30	58	50	30	Row 2, Column 1
90	58	50	30	Row 2, Column 2
150	58	50	30	Row 2, Column 3
210	58	50	30	Row 2, Column 4
270	58	50	30	Row 2, Column 5
30	98	50	30	Row 3, Column 1
90	98	50	30	Row 3, Column 2
150	98	50	30	Row 3, Column 3
210	98	50	30	Row 3, Column 4
270	98	50	30	Row 3, Column 5
30	138	50	30	Row 4, Column 1
90	138	50	30	Row 4, Column 2
150	138	50	30	Row 4, Column 3
210	138	50	30	Row 4, Column 4
270	138	50	30	Row 4, Column 5