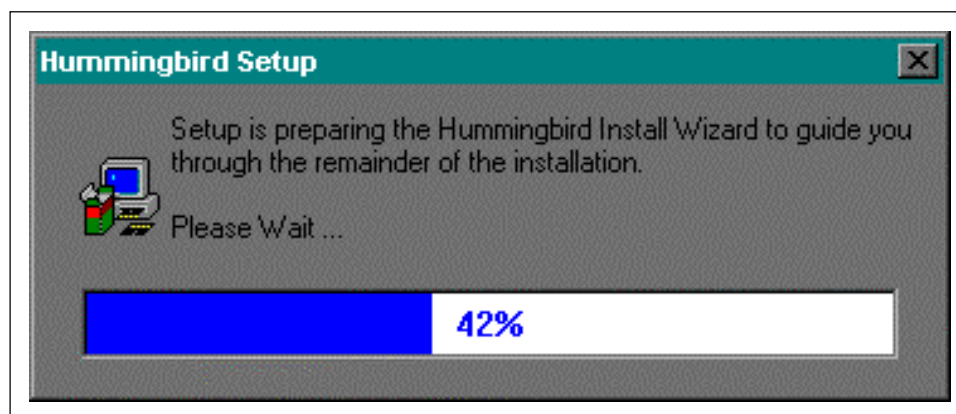
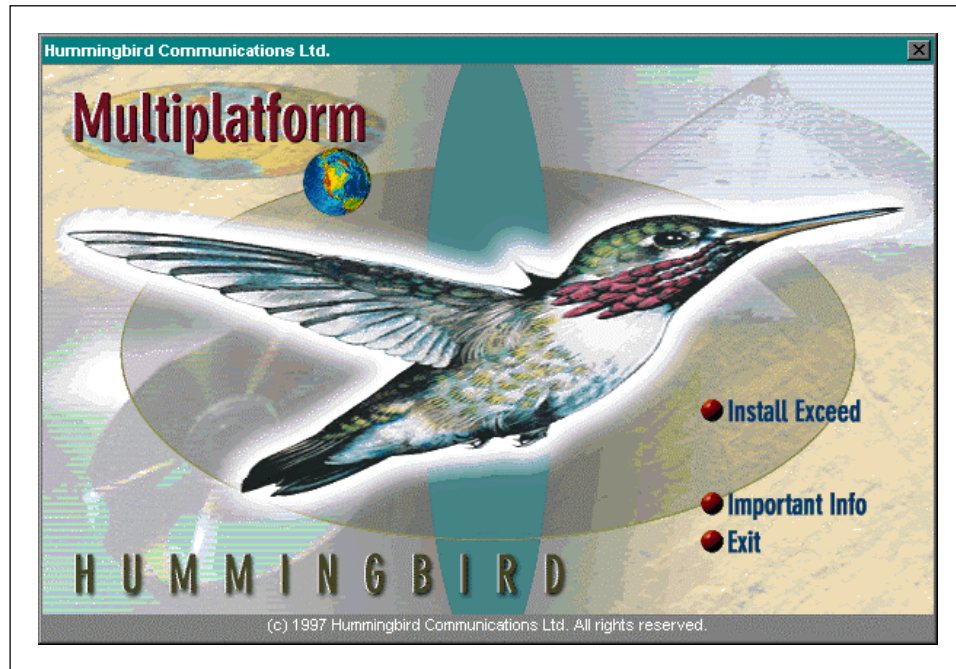
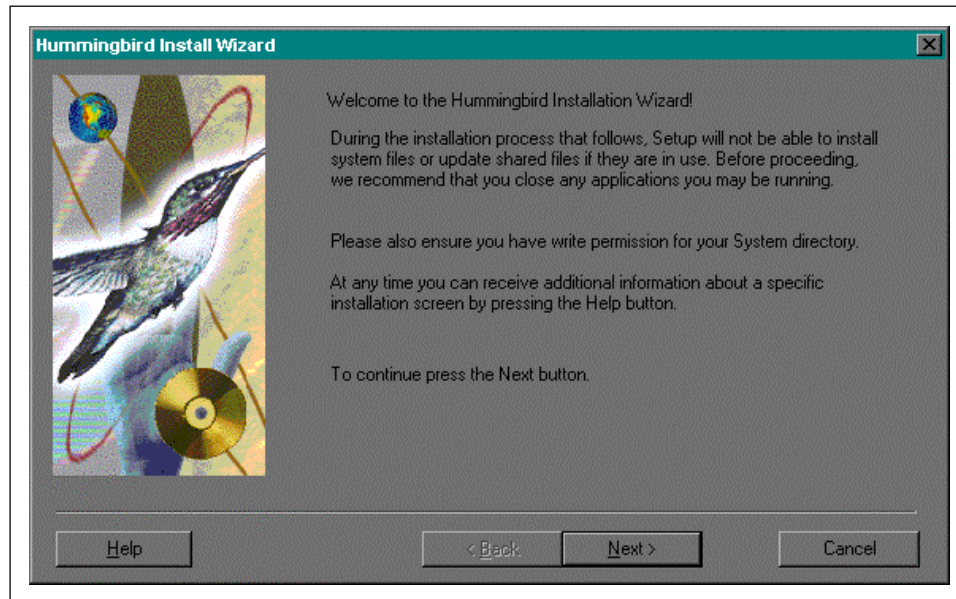


HUMMINGBIRD EXCEED V6.0 CD Installation Instructions

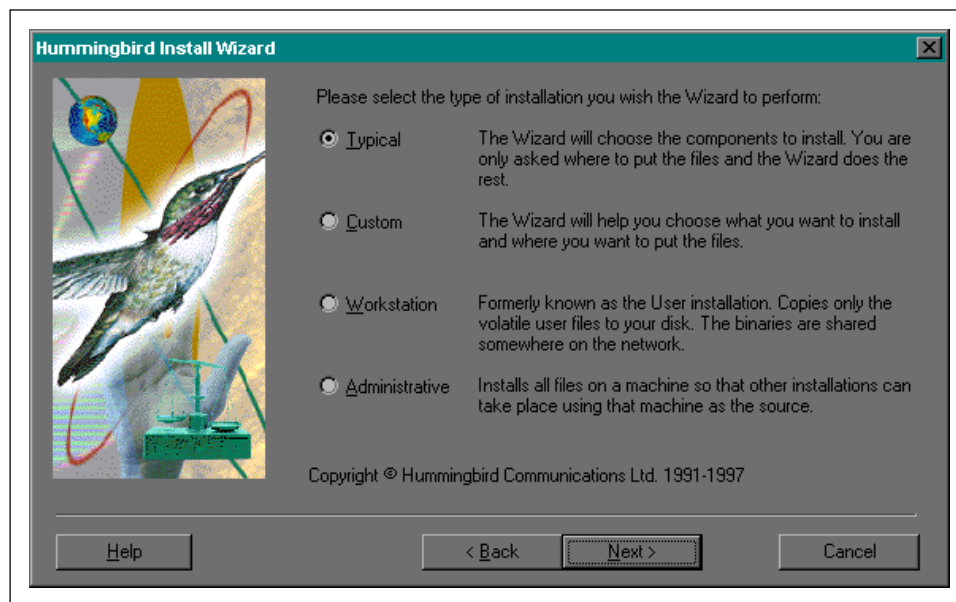
1. Load the CD and the following screen should appear. Chose Install Exceed. The Install Wizard will begin and prepare your system for the installation of Exceed V6.0.



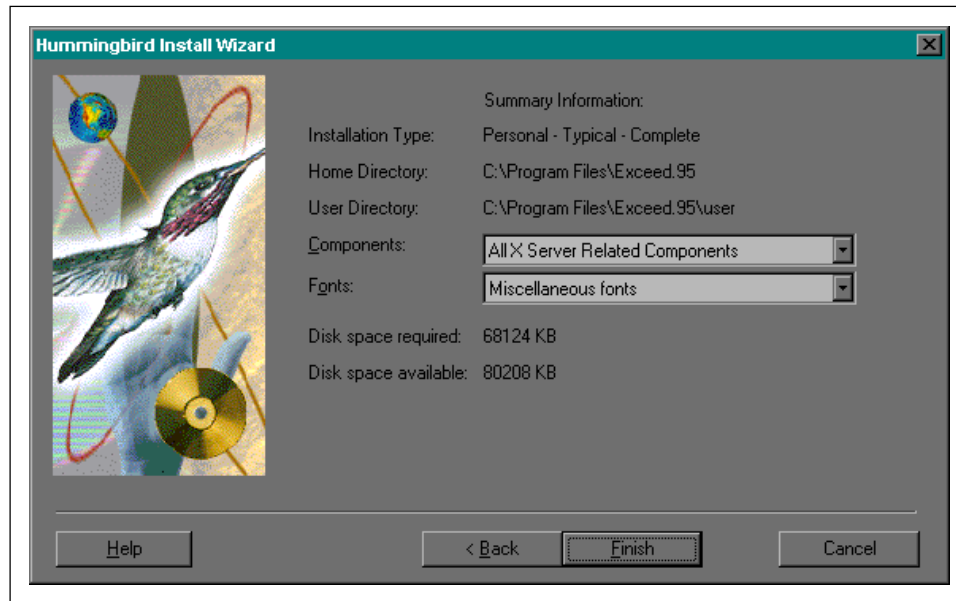
- This screen begins the installation process of Exceed. Follow the instructions as they are presented. CLICK NEXT



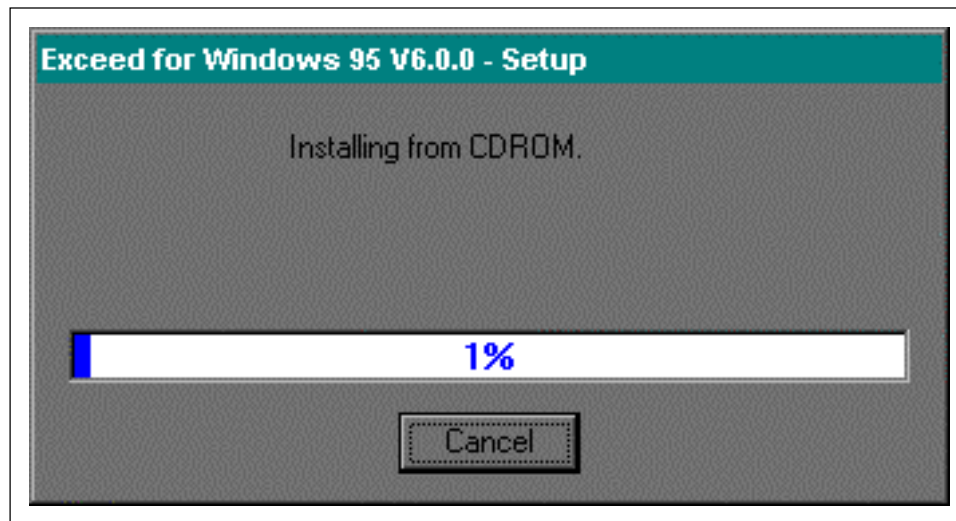
- Chose TYPICAL INSTALLATION. Then Click NEXT



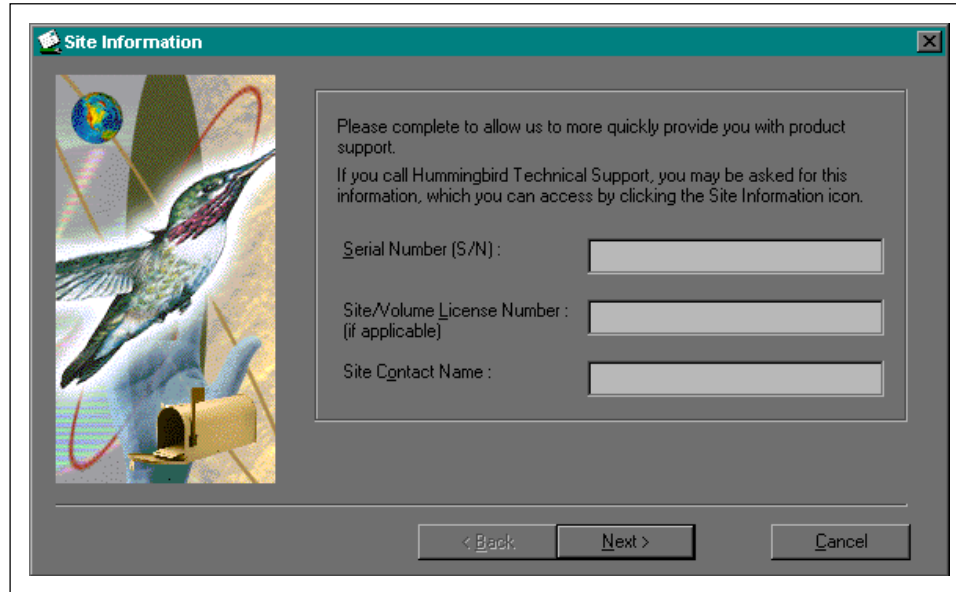
- 4. Below is the Summary screen that is generated when TYPICAL INSTALLATION has been chosen. Click on FINISH



The system will now load all the required files from the CD onto the host computer.

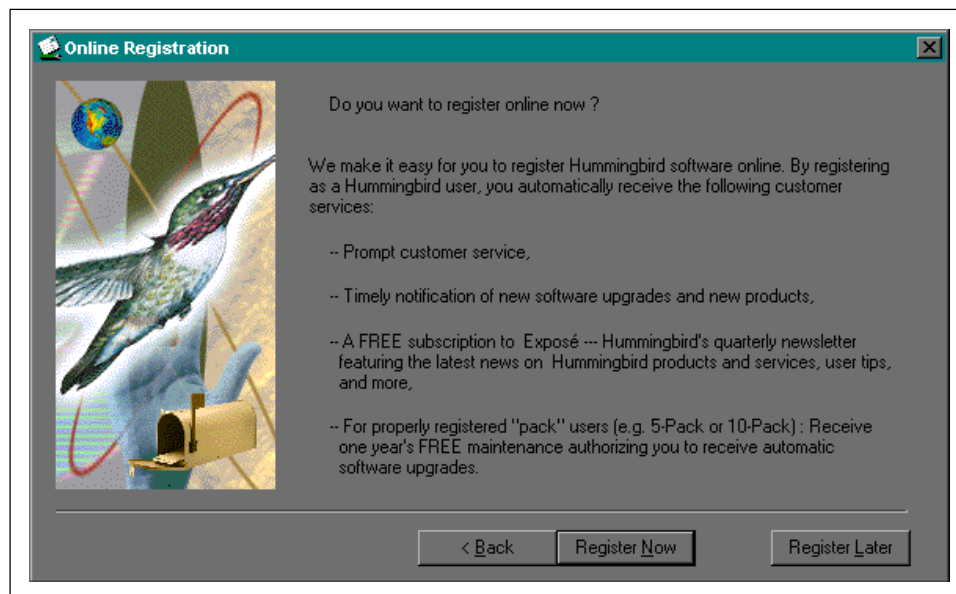


5. Enter in the Serial Number from the back of the CD Holder that Exceed V6.0.0 came in. Use the Site/Volume License when applicable and then enter in the Site Contact Name. (Generally a systems or network administrator.)

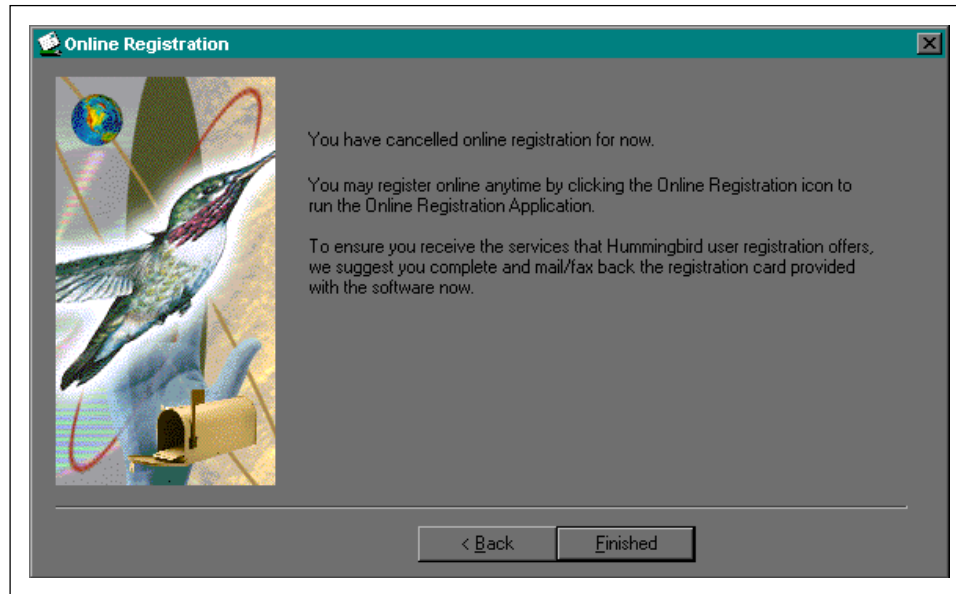


The 'Site Information' dialog box features a teal title bar with a globe icon and a close button. On the left is a graphic of a hummingbird on a hand with a globe and a mailbox. The main area contains text: 'Please complete to allow us to more quickly provide you with product support. If you call Hummingbird Technical Support, you may be asked for this information, which you can access by clicking the Site Information icon.' Below this are three input fields: 'Serial Number (S/N):', 'Site/Volume License Number: (if applicable)', and 'Site Contact Name:'. At the bottom are buttons for '< Back', 'Next >', and 'Cancel'.

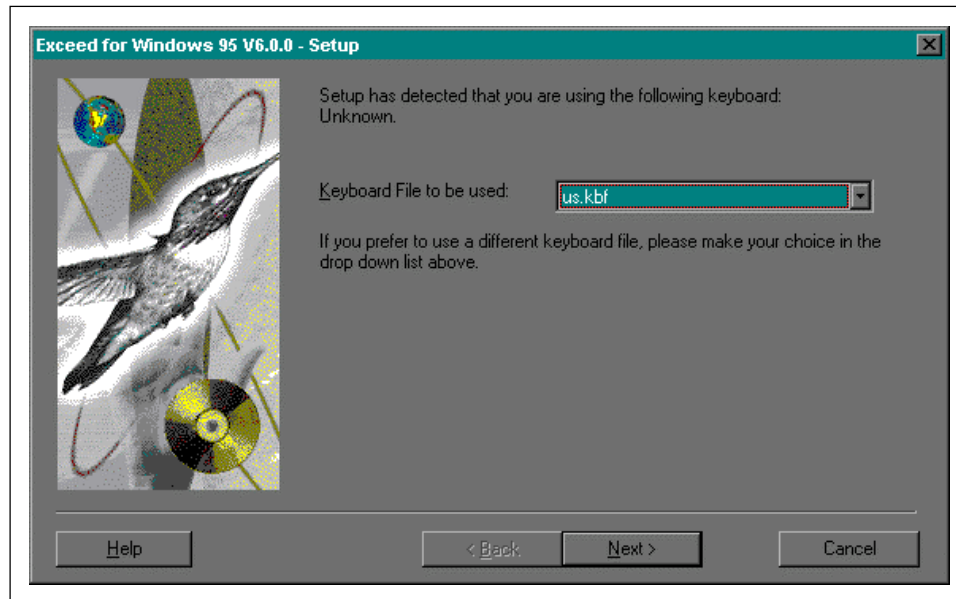
6. Chose whether to register on-line or wait till later (default: Later)



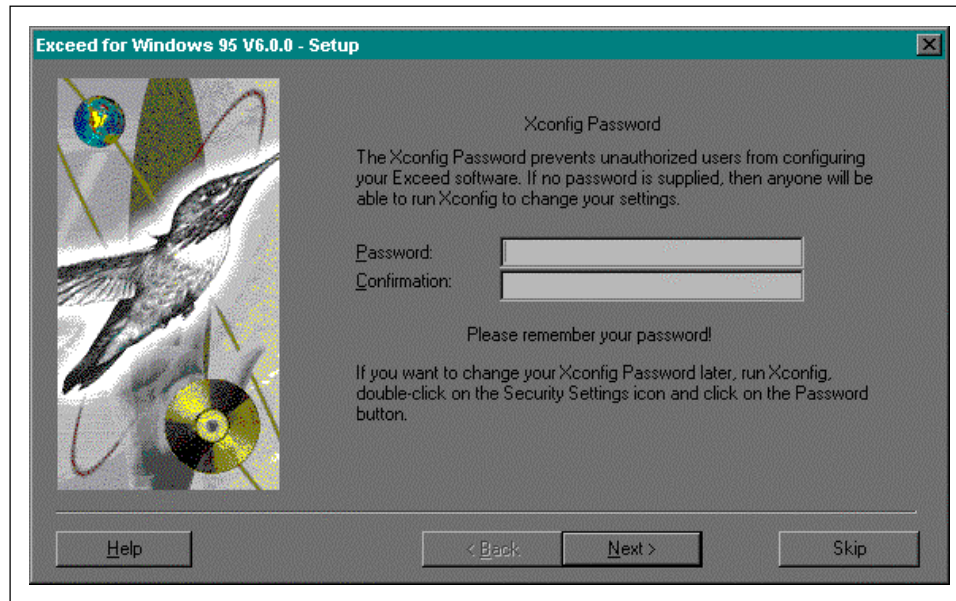
The 'Online Registration' dialog box has a teal title bar with a globe icon and a close button. It features the same hummingbird graphic on the left. The text asks: 'Do you want to register online now? We make it easy for you to register Hummingbird software online. By registering as a Hummingbird user, you automatically receive the following customer services:'. A bulleted list follows: '-- Prompt customer service,', '-- Timely notification of new software upgrades and new products,', '-- A FREE subscription to Exposé --- Hummingbird's quarterly newsletter featuring the latest news on Hummingbird products and services, user tips, and more,', and '-- For properly registered "pack" users [e.g. 5-Pack or 10-Pack]: Receive one year's FREE maintenance authorizing you to receive automatic software upgrades.'. At the bottom are buttons for '< Back', 'Register Now', and 'Register Later'.



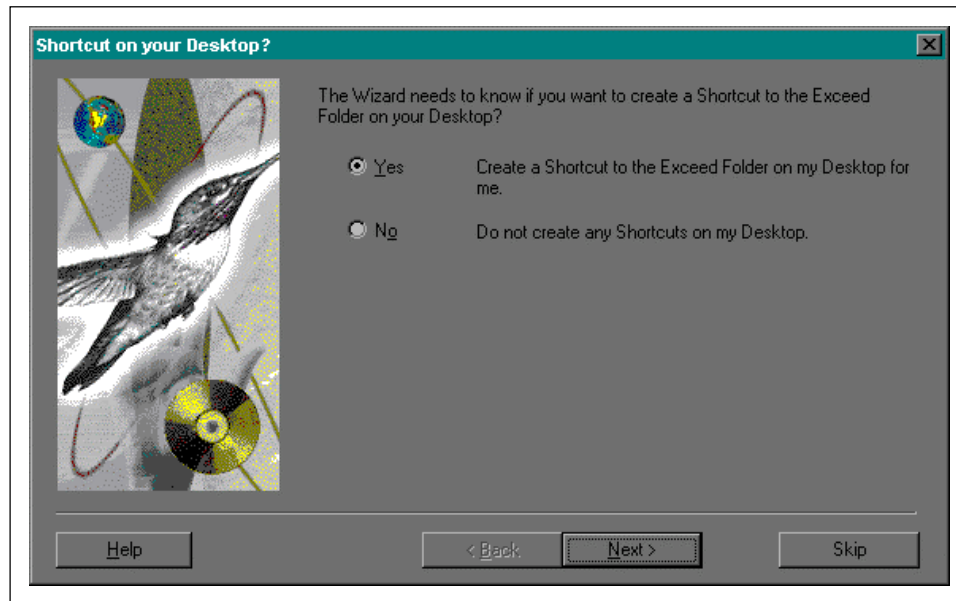
7. Chose the correct Keyboard layout style applicable. (DEFAULT: us.kbf)



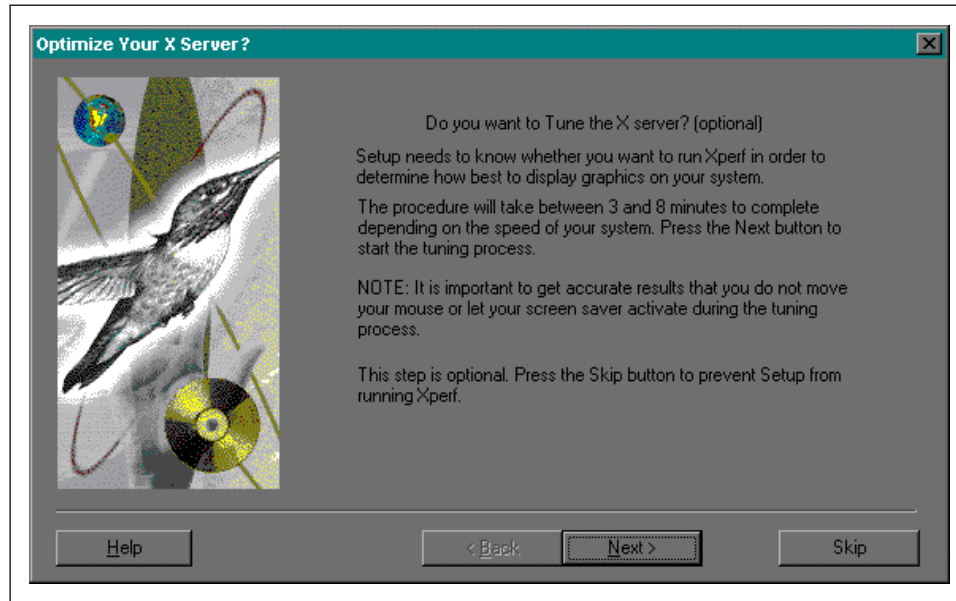
8. The following screen allows the user to enter a password to prevent altering to the machines Xconfig. (Default: SKIP)



9. Choice of whether or not to have Exceed create a shortcut to the Exceed Folder on the desktop. (DEFAULT: YES)

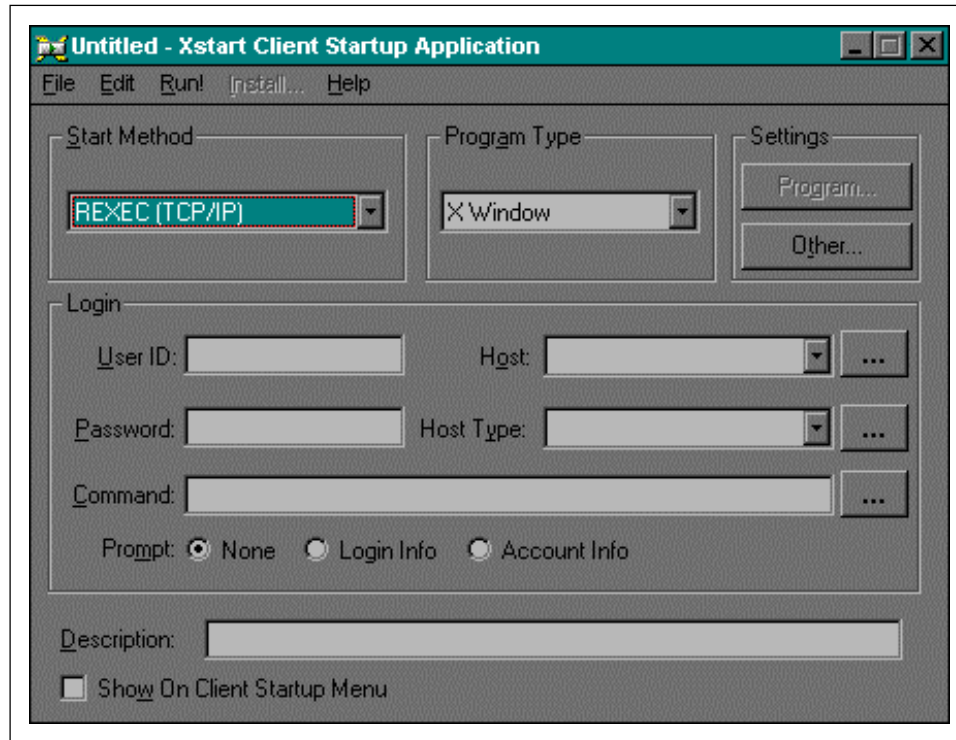


10. The final step is to have the installation configure the X-server for optimum performance graphically. This is **HIGHLY** recommended to do. This will help prevent graphical hang-ups which can occur. Xconfig will tune the system automatically, then will prompt the user to shutdown the system for all the exceed applications to take effect. Chose yes.



Creating XTERM & ProHelp Sessions with EXCEED V6.0.0

1. Open the desktop folders labeled Exceed and choose the XSTART ICON. The following screen should appear



START METHOD: (Default: REXEC [TCP/IP])

PROGRAM TYPE: (Default: X Window)

USER ID: Login ID for the HOST COMPUTER (**millen**)

HOST: Name of ProHelp Host. **Not the machine logging in from.**

PASSWORD: Password for the Login ID

HOST TYPE: LEAVE BLANK

COMMAND: There are two command lines to enter one for Xterm and one strictly to run ProHelp. They are as follows:

XTERM SETUP:

`/usr/X/bin/xterm -ls -display machinename:0.0`

ProHelp SETUP:

`/usr/prohelp/tools/remote machinename:0.0 -name ProHelpTerm -e prohelp`

machinename : is the IP address of the machine you are using to exceed into ProHelp from. (i.e. the machine exceed was installed on)