

## Event Based Interface

*This application note describes how to configure the real-time “Event Based” interface between ProHelp® EPM and CMS.*

### 1. Overview

Mattec’s sister company, CMS Software, is a leading provider of ERP software, manufacturing software, and supply chain management software solutions to manufacturers and distributors.

Today, there are three main methods for exchanging data between CMS and ProHelp® EPM, including:

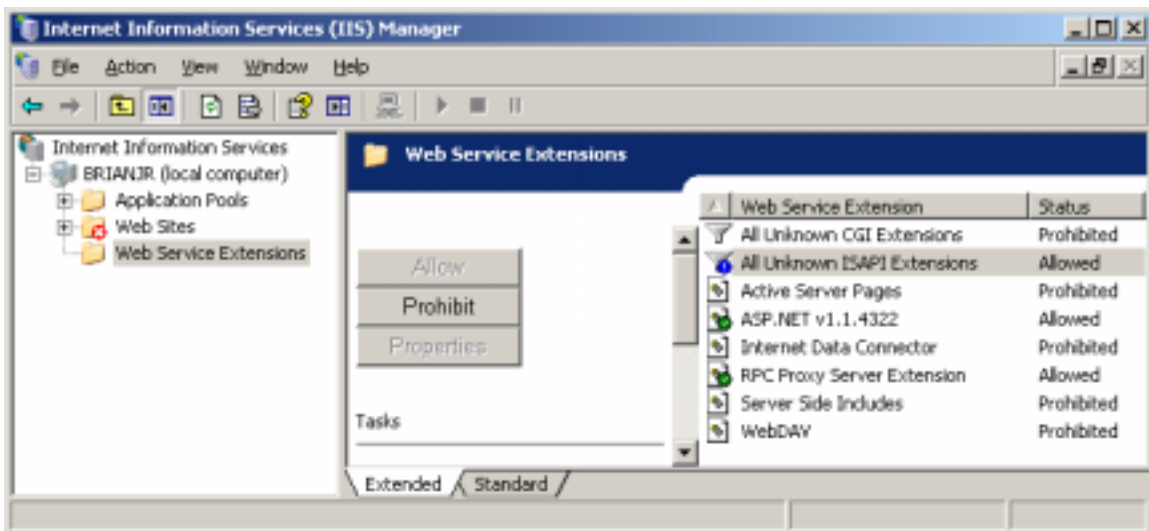
- Data, such as master files, work orders, and schedules are passed from CMS directly into the ProHelp® EPM database.
- “CMS Batch” – Data, such as production history, is passed directly from the ProHelp® EPM database into CMS. Data can be passed frequently or once per shift and can be posted automatically or reviewed by a user and then posted.
- “CMS Event Based” – Data, such as job changes, shift changes, and production information, is passed directly from the ProHelp® EPM system into CMS via CMS’s “Event Based” interface.

This application note will describe how to configure the Event Based interface for use with ProHelp® EPM.

## 2. Installation and Configuration

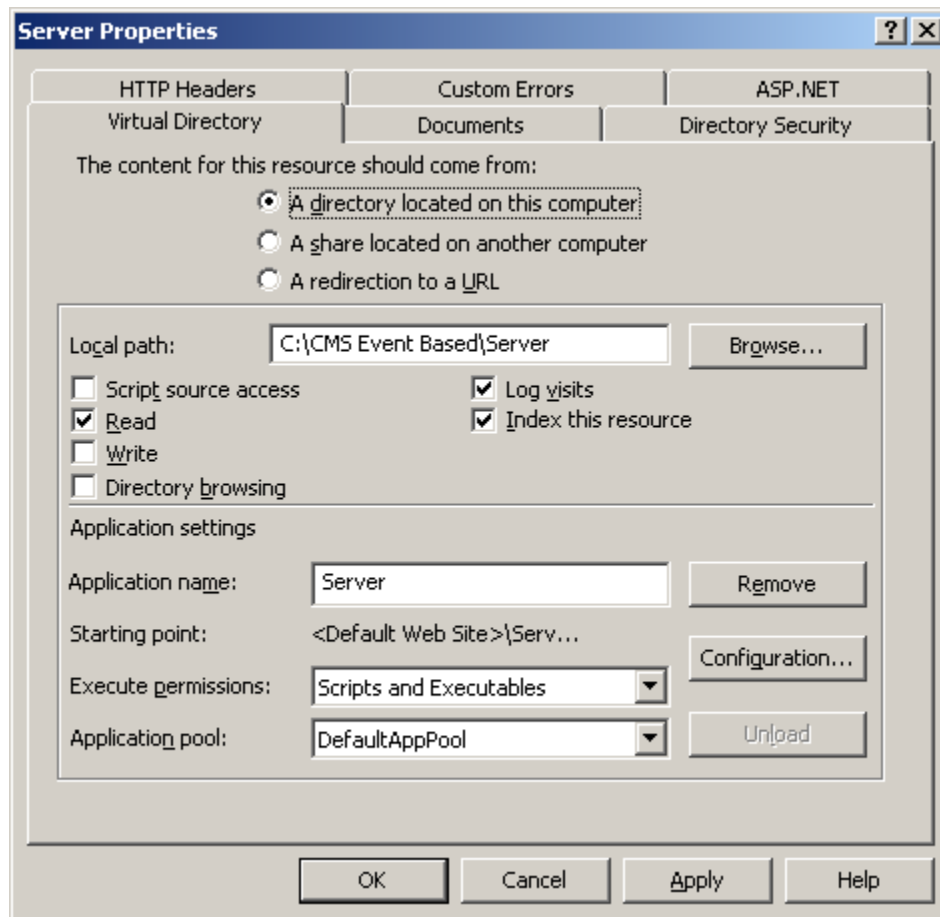
To install and configure the Event Based interface on the ProHelp® EPM server computer, follow these steps:

1. Install the IBM Client Access program on the ProHelp® EPM server computer.
2. Copy the files provided by Mattec’s Manufacturing Department, including the Client, Tools, Configuration, and Server directories, to the directory “C:\CMS Event Based” on the server computer.
3. Install IIS.
4. In the Internet Information Services (IIS) Manager on the Control Panel, ensure that you enable “All Unknown ISAPI extensions”, as shown below:



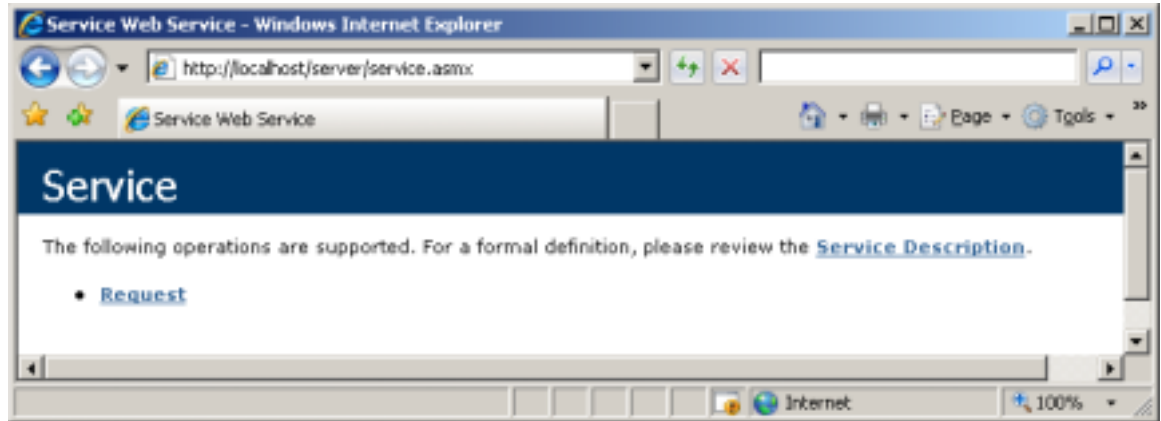
**IIS – Web Service Extensions**

5. Add a new Virtual Directory named “Server” for the directory “C:\CMS Event Based\Server”. To do this, open the Web Sites folder, right-click on the Default Web Site, and select New -> Virtual Directory. Press the ASP.NET tab and ensure the ASP.NET version is set to 2.0.

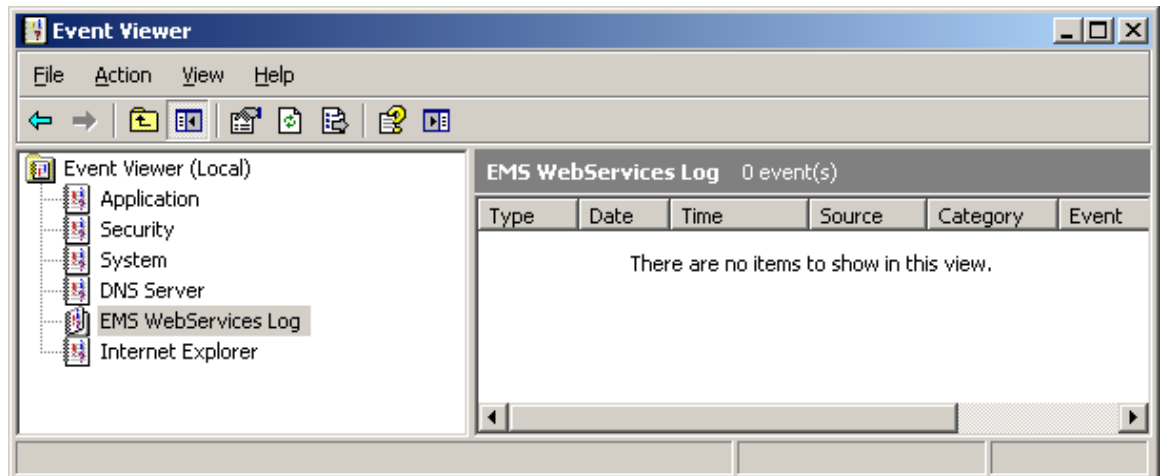


**Creating a Virtual Directory**

6. Modify the file C:\CMS Event Based\Web.config as necessary. Open Internet Explorer and launch the URL <http://localhost/Server/Service.asmx>. Do not continue until this returns without errors, as shown below:



7. Modify the file C:\CMS Event Based\Configuration\Mattec.bat. Execute this file. This will register all files that are needed and add "EMS WebServices Log" into the Windows Event Viewer.



**Event Viewer - EMS WebServices Log**

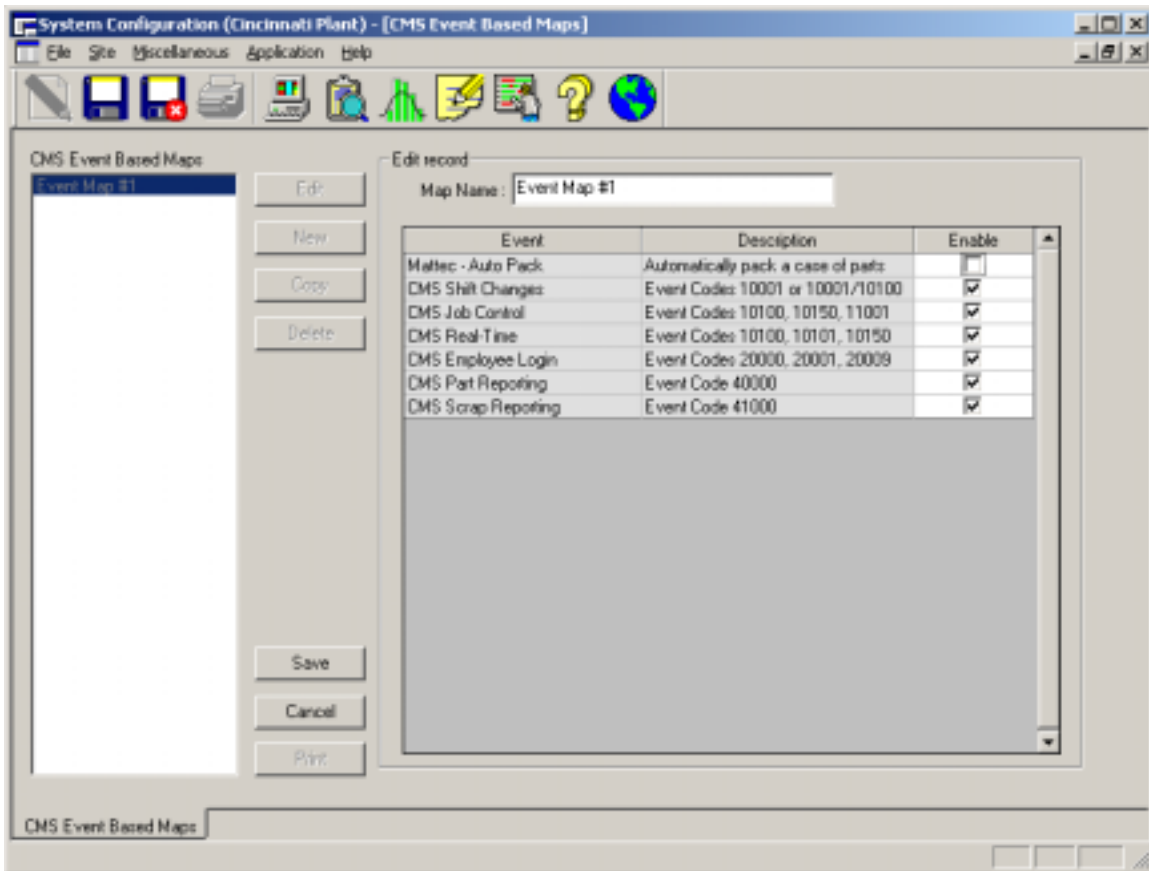
8. Ensure the files EventBased.exe and EventBased.config exist in the directory C:\Program Files\Mattec\ProHelp\Bin. Modify the file EventBased.config as necessary. Run the test program EventBased.exe and verify that events are being sent correctly and logged in the Windows Event Viewer.
9. Copy the file EventBased.config to Moller.config in the directory C:\Program Files\Mattec\ProHelp\Bin.

### 3. Installation and Configuration

You have control over which machines will send data to CMS using the Event Based interface and even have control over which collection of CMS Events will be used. You can even use Event Based entry for some machines and use the Batch Interface for other machines.

**To configure a CMS Event Based Map within ProHelp® EPM, follow these steps:**

- Start the **system configuration** program. To do this, start the **Main Menu** and press the **Launch System Configuration** icon.
- Click the **site** menu and select **CMS Event Based Maps**. The **CMS Event Based Maps** screen will be displayed.



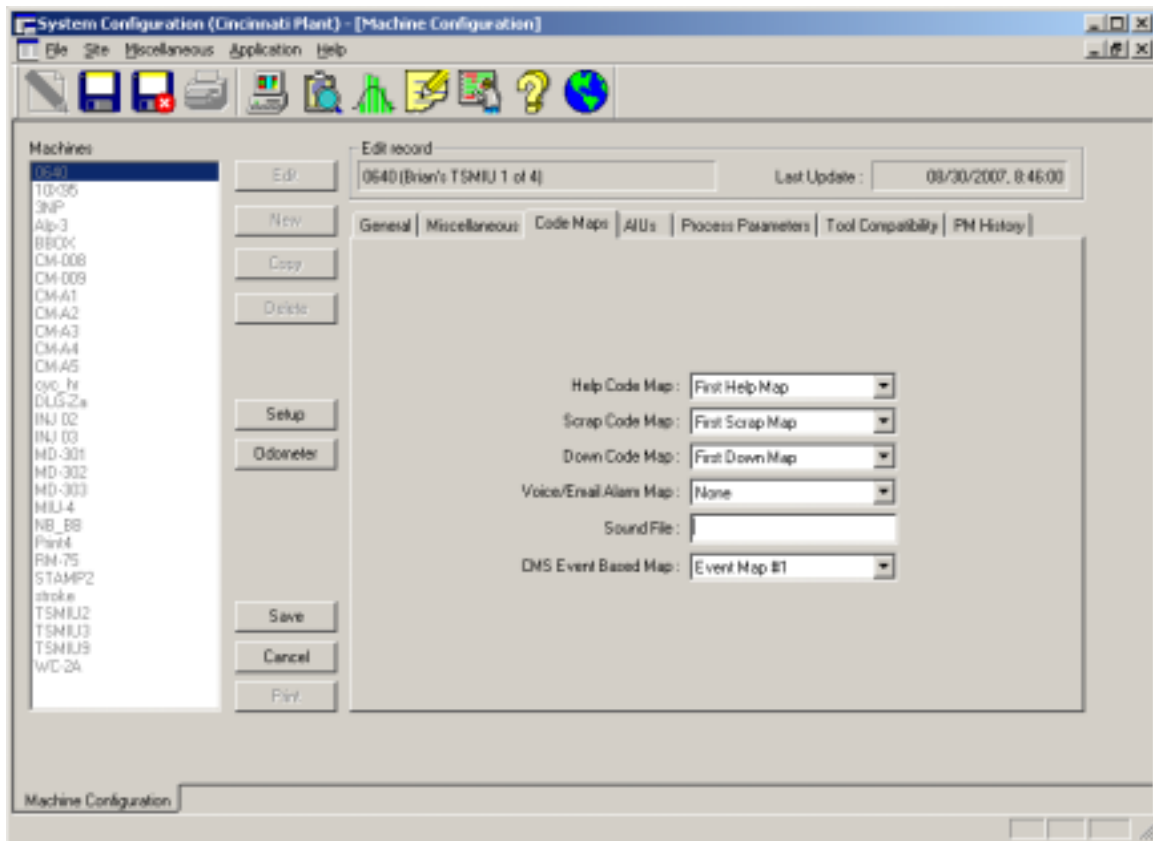
**CMS Event Based Maps Configuration**

You can view existing Event Based Maps, edit existing Event Based Maps, create new Event Based Maps, and delete existing Event Based Maps if you have been assigned appropriate security permissions by the System Manager. You can not delete an Event Based Maps if the map is assigned to a machine.

Once you have created a CMS Event Based Map, you must assign it to one or more machines.

**To assign a CMS Event Based Map to a machine, follow these steps:**

- Start the **system Configuration** program. To do this, start the **Main Menu** and press the **Launch System Configuration** icon.
- Click the **site** menu and select **Machine Configuration**. The **Machine Configuration** screen will be displayed. Press the **Code Maps** tab. Specify a CMS Event Based Map, as appropriate.



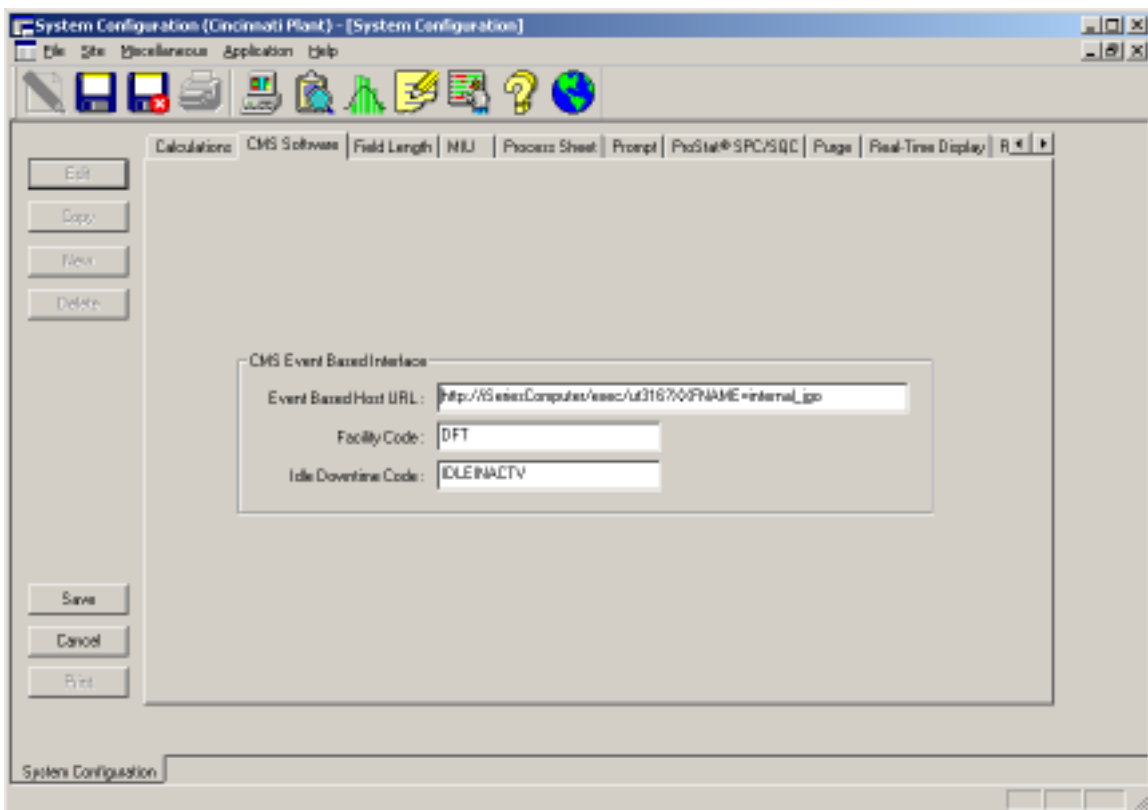
**Machine Configuration**

## 4. Miscellaneous Configuration

The System Configuration program is used to configure additional CMS-related settings.

**To configure additional CMS-related fields within ProHelp® EPM, follow these steps:**

- Start the **system Configuration** program. To do this, start the **Main Menu** and press the **Launch System Configuration** icon.
- Click the **site** menu and select **system Configuration**. The **system Configuration** screen will be displayed. Press the **CMS software** tab and modify these values, as appropriate.



**CMS Software Configuration**

The “Event Based Host URL” is a URL that can be launched from Mattec’s PCMIU application. It can be used to take you to the JGO or JGO Rich Event Based application within CMS.

The “Facility Code” and “Idle Downtime Code” must correspond to the settings in your CMS software.